

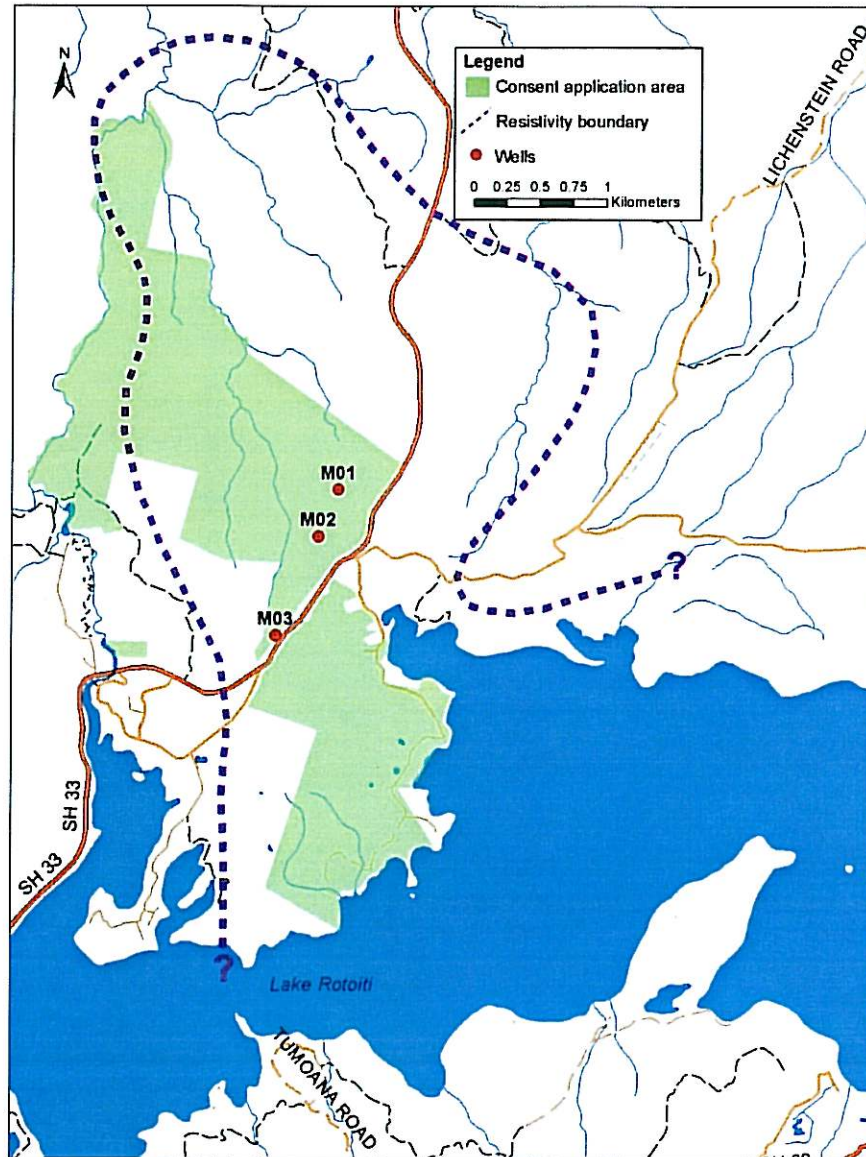
14Sep12

TAHEKE GEOTHERMAL PROJECT

Taheke 8C Inc – Contact Energy Limited
Update for Taheke AGM 17-11-12



Taheke Geothermal Field

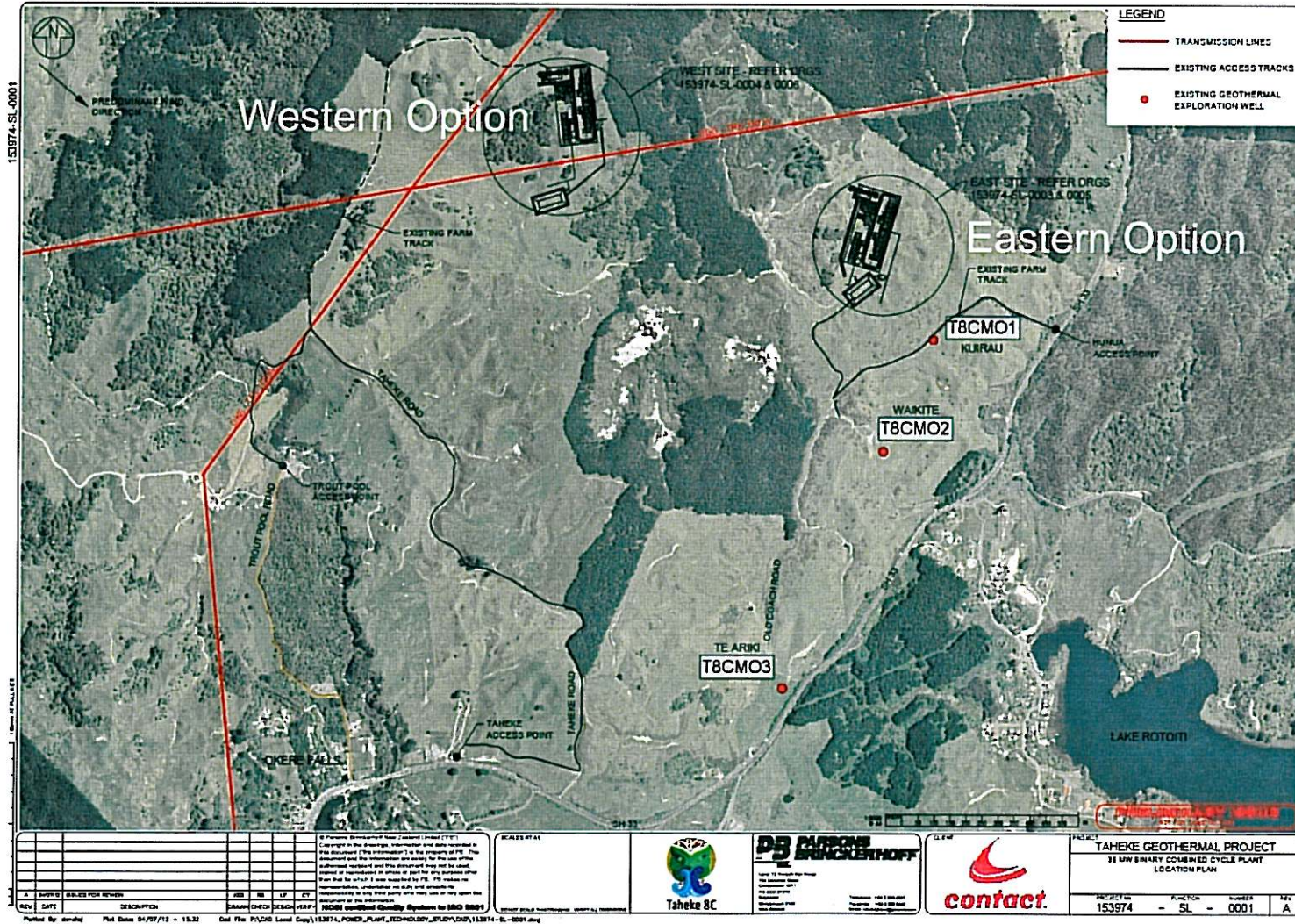


Project Concept

- Based on our current knowledge of the field we have developed a project concept on which to start assessing the environmental effects.
- Currently looking at two alternative power station sites :
 - Western option
 - Eastern option
- We will eventually select one site.
- Concept power station is 35MW, likely to be a Binary Cycle Power Plant with provision for a back pressure steam turbine.
- Connecting into Tarukenga – Edgecumbe 220kv transmission line.
- Associated steamfield plant will be oriented to whichever power station location is eventually elected.
- This project concept will be used to assess the environmental effects of the development.

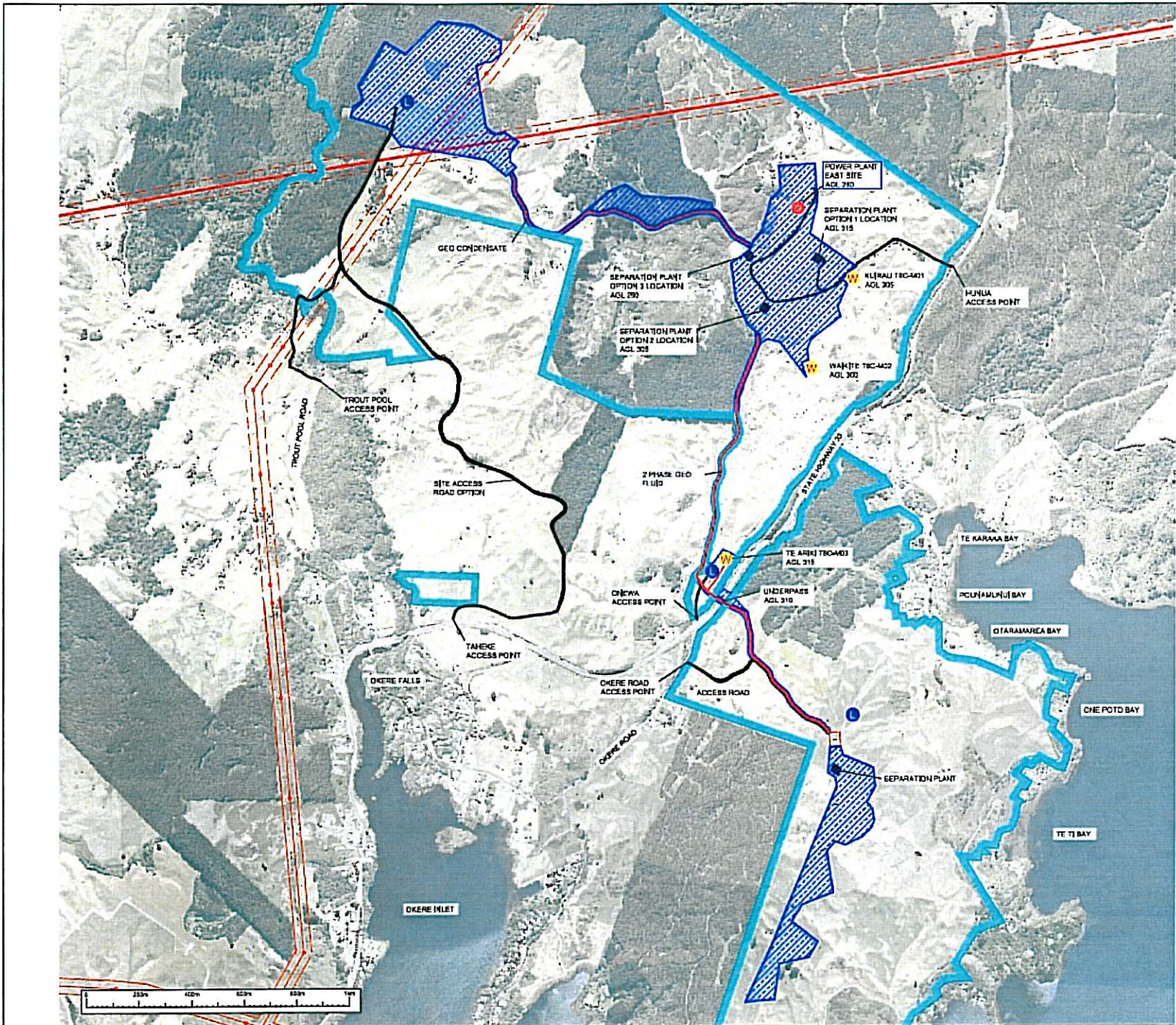


Potential Power Station Sites



Te Huka (Tauhara)





REFERENCE DRAWINGS

DWG No	DESCRIPTION

- ACCESS ROAD
- PIPING CORRIDORS
- AREA OF POTENTIAL FLOW
- TRANSMISSION LINES
- EXISTING TRANSMISSION
- CONSENT APPLICATION 1
- APPROXIMATE (DRAFT) ABOVE GROUND PIPING
- LAY DOWN AREA
- EXISTING WELL SITE
- POWER PLANT (DRAFT)

C	FOR INFORMATION	RCA
D	FOR INFORMATION	RCA
A	FOR INFORMATION	RCA
DWG No	DESCRIPTION	REV
DESIGNED		CHECKED
DRAWN		CHECKED
APPROVED FOR CONSTRUCTION		

DWG FILE NAME: G5200340
 BOARD: SHEET: 55/59

THIS DRAWING AND CONTENTS IS THE PROPERTY OF DOBBIE ENGINEERS LTD. and is to be returned without comment upon request.

DE DOBBIE	DOBBIE ENGINEERS
	ROTORUA
	PH (07) 348 8488 FX
WWW.DOBBIEENGINEERS.CO.NZ	

CLIENT:

PROJECT: TAHEKE GEOTHERMAL F

Drawn: TAHEKE PLANT SITES AND PIPING CORRIDORS EAST SITE LAYOUT

CLIENT Drawing No.:

PROJECT No. G5200	DRAWING No. SK034
-------------------	-------------------

Development of Consent Application

- **It is planned to lodge an application for resource consents with the Bay of Plenty Regional Council and Rotorua District Council in the first half of 2013.**
- **We are currently developing the consent application:**
 - Project Description
 - Geoscience Report
 - Effects Assessments:
 - Air Emissions
 - Reservoir assessment
 - Subsidence
 - Effects on the Okere River (hydrology and ecology)
 - Groundwater effects
 - Noise
 - Traffic
 - Archaeology and cultural values
 - Visual and Landscape
 - Terrestrial Ecology
 - Effects on surface geothermal features
 - Economic Effects (national and regional)
 - Stormwater, construction effects, earthworks and sediment control.



Indicative timeframe going forward

